



GOOD MORNING

Have Good Trading Day

MONDAY



Price is what you pay.
Value is what you get.

- Warren Buffet



MARKET PULSE

INDIAN INDICES

NAME	CMP	NET CH.	%
SENSEX	28832	-7	-0.03
NIFTY	8897	-2	-0.02

INDIAN ADR'S

SYMBOL	CLOSE	GAIN/ LOSS %
DRREDDY	43.12	+0.04
HDFCBANK	71.61	-0.11
ICICIBK	8.34	+0.03
INFY	15.38	+0.10
TATAMOTOR	34.81	+0.17
WIPRO	9.86	-0.03

FII AND MF ACTIVITY

SYMBOL	In Crs.
FIIs Eq (Provisional)	+1529
FIIs Index Future	-1337
FIIs Index Options	+3
FIIs Stock Future	+440
FIIs Stock Options	+29
DIIs Eq (Provisional)	-737

CURRENCY

RBI RATE	03-MAR-2017
RUPEE - \$	66.8354
EURO	70.3509
YEN 100	58.5500
GBP	81.9603

MARKET PULSE

GLOBAL INDICES

NAME	CMP	NET CH.	%
DOW	21005	+2	+0.01
NASDAQ	5870	+10	+0.16
NIKKEI	19377	-92	-0.47
HANG SENG	23596	+43	+0.18
SGX NIFTY	8938	+16	+0.18

WORLD COMMODITIES

FUTURE	U\$\$	CHANGES
CRUDE	53.12	-0.21
NATURAL GAS	2.909	+0.082
GOLD	1233.8	+7.3
SILVER	17.890	+0.150
COPPER	2.6945	-0.0015

WORLD EVENTS

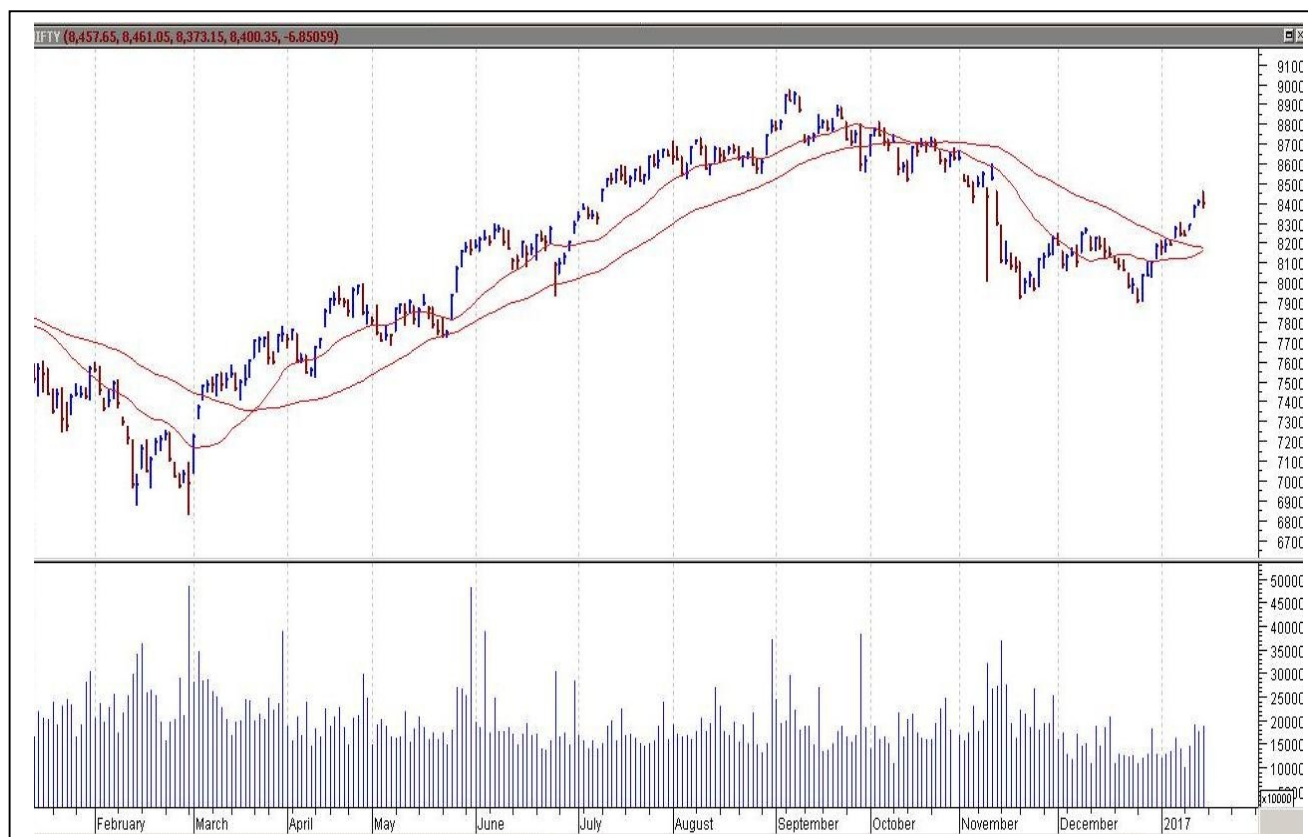
- US: FOMC Member Kashkari Speaks
- UK: MPC Member Hogg Speaks

TOP STORY

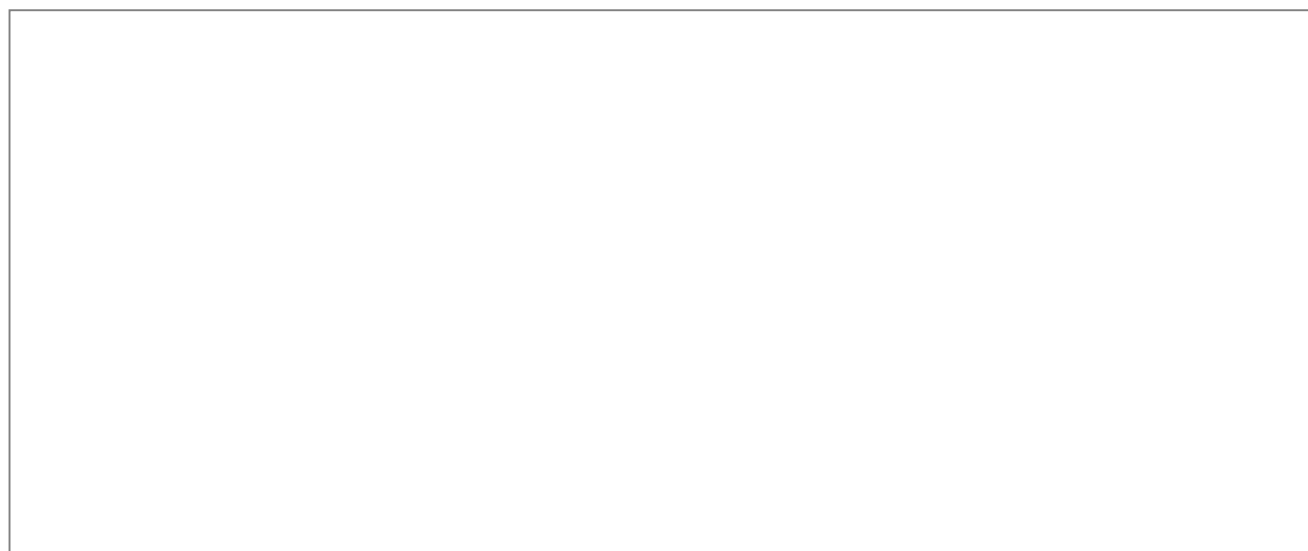
- SAIL SAIL may be asked to run Monnet Ispat Govt gives nod for sale of 3 SAIL plants.
- hree Cement Wins Bid For 60,000 T Per Year Of Coal From CIL Unit In Coal Linkage Auction.
- ARSS Infra JV Company gets order worth Rs140.5cr by Rail Vikas Nigam.
- ISMT resumed production at Jejuri plant & exploring various strategic investment options for fund raising.
- JP Associates & Ultratech - NCLT, Allahabad Bench approves transfer of Jaypee Cement to Ultratech.
- Cipla Signs Pact w/Ascendis Health To Divest Animal Health Business In South Africa.
- Tata Steel may scrap merger plans with ThyssenKrupp.
- Religare Says Broking Biz Of Religare Securities To Be Demerged To Religare Broking.
- Force Motors Feb production of 2795 units vs sales of 2491 units.



NIFTY CHART



MARKET COMMENTARY



MARKET LEVELS

	CMP	SUPPORT LEVELS				RESISTANCE LEVELS			
NIFTY	8897	8865	8845	8835	8815	8915	8925	8935	8955
USDINR	67	66.9	66.8	66.75	66.7	67.1	67.15	67.2	67.25



BULK DEALS (BSE)

SCRIP	CLIENT NAME	BUY/SELL	QUANTITY	PRICE
ENERGYDEV	DEVEN SURESH PATHAK	S	275,700	38.97
GEOMETRIC	RELIANCE MUTUAL FUND	B	752,500	259.35
GEOMETRIC	MANU PARPIA	S	1,000,000	259.5
SINTEX	PAM-A/C PLATINUM ASIA FUND	S	9,094,281	93.75
SINTEX	MERRILL LYNCH MARKETS SINGAPORE PTE. LTD.	B	5,700,000	93.75

BULK DEALS (NSE)

SCRIP	CLIENT NAME	BUY/SELL	QUANTITY	PRICE
APOLLOHOSP	DB INTERNATIONAL ASIA LIMITED	BUY	3926000	1267
APOLLOHOSP	INTEGRATED MAURITIUS HEALTHCARE HOLDINGS LIMITED	SELL	8439148	1267.46
ENERGYDEV	DEVEN SURESH PATHAK	SELL	285120	38.98
GTOFFSHORE	METAL IMPORT PVT LTD	SELL	1566000	16.85
TEXMOPIPES	SAM FINANCIAL SERVICES LLP	SELL	141442	19.65

SCRIP'S IN F&O BAN

(To resume for normal trading below 80% of market wide limit required)

JINDALSTEL,JPASSOCIAT,

Initial Public Offering (IPO)

Company Name	Security type	Issue Start Date	Issue End Date	Status
Music Broadcast Limited	Equity	06-Mar-2017	08-Mar-2017	OPEN
Avenue Supermart Ltd.	Equity	08-Mar-2017	10-Mar-2017	Forthcoming



NIFTY 50 STOCKS: SUPPORT & RESISTANCE

Symbol	Close	Support 1	Support 2	Pivot Point	Resistance1	Resistance2
ACC	1394	1384	1375	1401	1410	1427
ADANI PORTS	296	292	289	295	299	301
AMBUJACEM	225	223	221	227	229	232
ASIANPAINT	1014	1004	995	1016	1025	1037
AUOPHARMA	675	668	662	672	679	683
AXISBANK	513	508	503	511	517	520
BAJAJ-AUTO	2833	2814	2794	2826	2846	2858
BANKBARODA	160	159	158	161	162	164
BHARTIARTL	356	352	349	357	361	365
BHEL	158	156	154	158	160	163
BOSCHLTD	21159	20953	20746	21276	21483	21806
BPCL	633	620	608	628	640	648
CIPLA	589	584	578	590	595	602
COALINDIA	321	320	318	322	324	326
DRREDDY	2871	2859	2846	2876	2889	2906
EICHERMOT	23089	22931	22773	23156	23314	23538
GAIL	520	508	495	515	528	535
GRASIM	1021	998	975	1013	1036	1052
HCLTECH	853	840	828	848	860	867
HDFC	1371	1359	1347	1378	1390	1409
HDFCBANK	1377	1369	1361	1377	1385	1392
HEROMOTOCO	3273	3221	3168	3253	3306	3338
HINDALCO	199	191	184	195	203	207
HINDUNILVR	877	872	867	876	881	885
ICICIBANK	276	274	273	277	278	280
IDEA	111	109	107	111	112	114
INDUSINDBK	1299	1289	1278	1298	1309	1319
INFRA TEL	308	298	288	304	314	320
INFY	1031	1010	988	1022	1044	1056
ITC	262	259	256	261	264	266
KOTAKBANK	810	803	796	810	817	824
LT	1470	1461	1451	1470	1479	1488
LUPIN	1476	1463	1449	1471	1484	1492
M&M	1322	1314	1305	1323	1331	1340
MARUTI	5888	5866	5843	5897	5919	5951
NTPC	156	155	154	156	157	159
ONGC	193	192	191	193	194	195
POWERGRID	191	189	187	190	192	193
RELIANCE	1259	1237	1216	1263	1284	1309
SBIN	265	263	261	266	268	271
SUNPHARMA	686	676	665	682	693	699
TATAMOTORS	460	457	454	462	465	470
TATAMTRDVR	280	278	276	281	283	286
TATAPOWER	82	81	80	82	83	84
TATASTEEL	495	491	486	494	499	502
TCS	2494	2480	2465	2490	2504	2514
TECHM	504	501	498	503	506	508
ULTRACEMCO	3802	3769	3735	3815	3848	3895
WIPRO	494	489	484	492	497	501
YESBANK	1434	1422	1410	1432	1444	1454
ZEEL	503	496	489	501	507	512

NEWS & RUMOURS:

- Gold (Spot Dollar) major support = \$1195/\$1164 & Resistance = \$1267/\$1311.
- Crude oil range->\$47 to \$57.
- Reflation Rally Retrenches before Yellen weighs In: Markets Wrap: - U.S. stocks fluctuated, while the dollar's five-day advanced ended as investors turned cautious before Janet Yellen discusses the state of the economy later Friday.
- Dollar pushes lower with Yellen speech in focus: - The dollar pushed lower against other major currencies on Friday, despite the release of upbeat U.S. service sector activity data, as traders turned their attention to a speech by Federal Reserve Chair Janet Yellen due later in the day.
- Oil edges higher as dollar slips, U.S. rig count on tap: - Oil edged higher Friday as the dollar slipped, with U.S. rig count data ahead. [Brent](#) crude was up 6 cents, or 0.11%, at \$55.14 at 08:00 ET. U.S. [crude](#) added 2 cents, or 0.04%, to \$52.63. Oil prices shed as much as 2% Thursday as U.S. crude stockpiles hit record levels and the dollar jumped. Sentiment was also dented by reports Russian output in February was flat compared to the previous month. Russia and other non-OPEC producers have signed up to cut output by some 558,000 barrels a day in the first half of the year.
- Gold prices move lower on U.S. rate hike talk: - Gold prices moved lower on Friday, as growing expectations for a March rate hike in the U.S. and a stronger U.S. dollar continued to weigh on the precious metal. A strong U.S. dollar usually weighs on gold, as it dampens the metal's appeal as an alternative asset and makes dollar-priced commodities more expensive for holders of other currencies.

TRENDS & OUTLOOK – DATE: 06- Mar- 2017

PRECIOUS METALS:

COMMDITY (MCX)	S2	S1	PIVOT POINT	R1	R2
GOLD (Apr)	28500	28710	29070	29430	29700
SILVER (May)	39600	41000	42500	44100	45766

BASE METALS

COMMDITY (MCX)	S2	S1	PIVOT POINT	R1	R2
COPPER (Apr)	386	392	398	403	411
ZINC (Mar)	177.45	181.25	185.65	190.35	195.65
LEAD (Mar)	142.20	146.55	150.75	156.60	160.45
NICKEL (Mar)	691	707	730	755	777

ENERGY

COMMDITY (MCX)	S2	S1	PIVOT POINT	R1	R2
CRUDE OIL (Mar)	3290	3400	3540	3685	3790
NATURAL GAS (Mar)	174	180	187	195	203

DATA TALKS : TODAY'S ECONOMIC DATA :

Factory Orders m/m.



LET THE
**WOMAN
POWER RISE**

**WOMEN
DESK**

All the Ladies in the house are
cordially invited to come
& explore their trading talents.

TOLL FREE: 18001030059



Registered Office

Indira House, 3rd Floor, 5 Topiwala Lane,
Opp. Lemington Road Police Station, Grant Road (East), Mumbai - 400007.

Corporate Office

'Ramavat House' E-15, Saket Nagar, Indore - 452018 (M.P.)

Customer Care

Tel: +91-731-4097170/ 71/ 72/ 73/ 74 M. +91 93031 72345

Email: customercare@indiratrade.com www.indiratrade.com



INSTITUTIONAL DEALING UNIT

Africa House, 5, Topiwalla Lane, Lamington Road, Mumbai, 400007

Tel: +91 22 30080678 Fax : +91 22 23870767 Email : ie@indiratrade.com

Disclaimer

This report is for private circulation within the Indira Group. This report is strictly confidential and for information of the selected recipient only and may not be altered in any way, transmitted to, copied or distributed, in part or in whole, to any other person or to the media or reproduced in any form. This report should not be construed as an offer or solicitation to buy or sell any securities or any interest in securities. It does not constitute a personal recommendation or take into account the particular investment objectives, financial situations, or any such factor. The information, opinions estimates and forecasts contained here have been obtained from, or are based upon, sources we believe to be reliable, but no representation of warranty, express or implied, is made by us to their accuracy or completeness. Opinions expressed are our current opinions as of the date appearing on this material only and are subject to change without notice.